



Port  
Hedland  
Industries  
Council

# Community Industry Forum

20 May 2026

# Agenda

1. Acknowledgement of Country
2. Confirmation of Minutes
3. Introductions and apologies
4. Action Items / Governance / Questions on Notice
  - Terms of Reference
5. Presentations:
  - PHIC Update  
*Krista Dunstan, CEO, PHIC*
  - EdConnect  
*Carol Shannon, General Manager & Leonie Forest, Pilbara & Mid West Area Manager.*
  - Mineral Resources  
*Daniel Barker, Manager Communities & Stakeholder Engagement.*
  - Department of Water & Environmental Regulation  
*Ed Schuller A/Executive Director*
6. Other Items
7. Meeting Actions
8. Next meeting – Wednesday 19<sup>th</sup> August 2026 (TBC)

PHIC acts collaboratively for the benefit of industry and the Port Hedland Community to ensure the long-term sustainable growth of the Port and the community.

## Guest Speakers

**Carol Shannon**, General Manager, & **Leonie Forrest**, Pilbara & Midwest Area Manager, EdConnect

**Daniel Barker**, Manager Communities & Stakeholder Engagement, Mineral Resources

**Ed Schuller**, *A/Executive Director, Department of Water & Environmental Regulation*

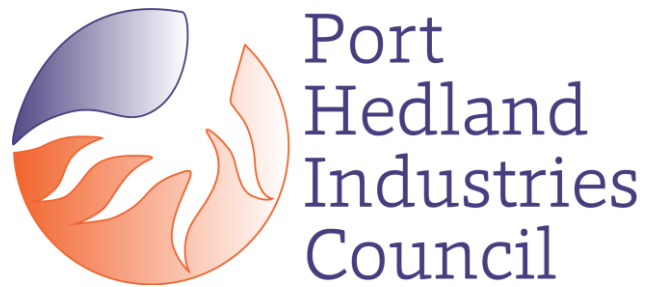
## Members



## Associate Members



# Port Hedland Industries Council Update



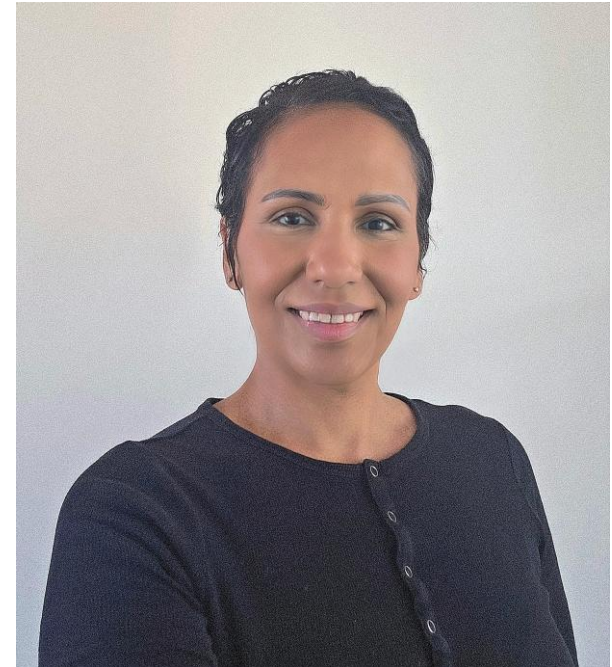
**Krista Dunstan**

---

CEO, PHIC

# Meet the new CRO

- Commenced as Community Relations Officer on Monday 4<sup>th</sup> May 2026.
- Angie is very excited to be a part of PHIC and what the it represents and is looking forward to building meaningful connections with PHIC members, Industry and community.



## 2025 air monitoring results

- One exceedance of the 24-hour average PM10 in Q3 FY26 verified by **Katestone**.
- All exceedances have background contribution.

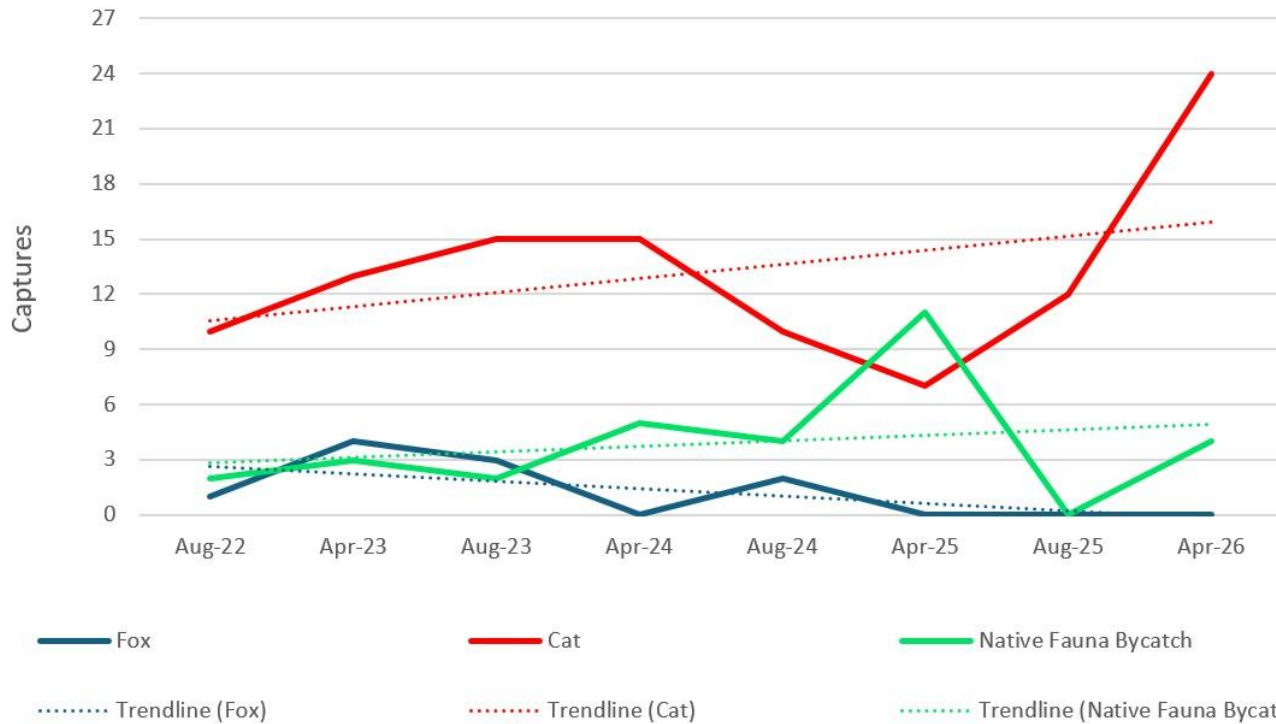
Date	24-hour average PM10 (ug/m3)			Likely Main Cause
	Taplin	BoM	Yule	
2 January 2026	74.5	39.4	30.6	Local (Industry)

## DWER air network management commenced 1 Jan 2022

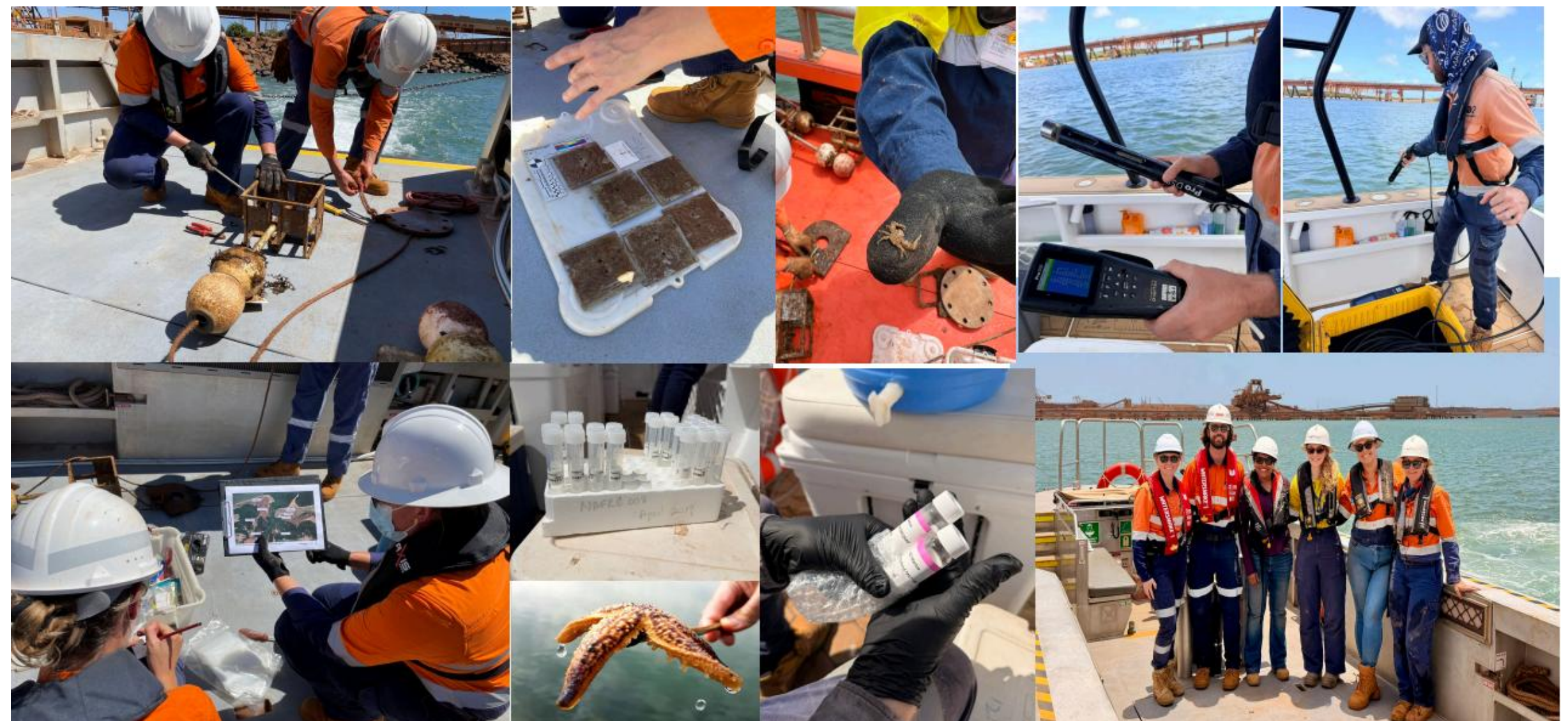
- PHIC continues to undertake quarterly analysis and reporting – presenting information to Port Hedland stakeholders via PHIC Community Industry Forum
- **DWER report will be presented for discussion**

# PHIC Environmental Programs: Vertebrate Pest Management Program

Port Hedland VPMP All Captures



# PHIC Environmental Programs: Marine Environmental Monitoring & Statewide Array Surveillance



# Presentations



**Leonie Forrest**  
North East Metropolitan  
Area Manager  
**Carol Shannon**  
General Manager



**Daniel Barker**  
Manager Communities  
& Stakeholder  
Engagement.



Department of Water and  
Environmental Regulation

GOVERNMENT OF  
WESTERN AUSTRALIA

**Ed Schuller**  
A/ Executive Director



**Leonie Forrest** *North East Metropolitan  
Area Manager*

---

**Carol Shannon** *General Manager*

# *Volunteers helping students thrive*



# 1 in 5

students are at risk of disengaging from their  
education



There are consistent themes across the country, but student disengagement is a particularly significant issue in regional Australian communities.





*The difference volunteers make:*



## **Extraordinary impact – one student at a time:**

A parent's perspective:

“Your exceptional guidance has profoundly transformed my daughter. From fostering her confidence and self-esteem to building her resilience, you have played a crucial role in shaping her positive outlook on education. Your time together has become a cherished highlight of her routine.”



**ED CONNECT**  
Australia

# The difference EdConnect volunteers make...

## EDCONNECT MEMBER SCHOOLS REPORTED



**93%**

of schools agreed that student self-esteem and confidence have increased



**88%**

of schools agreed that student social skills have improved



**85%**

of schools agreed that student prosocial behaviour has increased



**80%**

of schools agreed that student relationships with peers have improved

# What does volunteering look like ...

- for you?
- for a friend or family member?
  - for a colleague?
  - for a club member?
  - for everyone?



# Sponsors of the Port Hedland Mentors Program

## Current Sponsors



Department of  
Education



## Former Sponsors



# Questions?

Carol Shannon  
General Manager  
[carol.shannon@edconnect.org.au](mailto:carol.shannon@edconnect.org.au)  
0417 997 487

Leonie Forrest  
Area Manager – Pilbara  
[leonie.forrest@edconnect.org.au](mailto:leonie.forrest@edconnect.org.au)  
0429 135 489





**Daniel Barker**

---

Manager Communities &  
Stakeholder Engagement



# PORT HEDLAND INDUSTRY COUNCIL COMMUNITY INDUSTRY FORUM

May 2026

# DISCLAIMER

## **Acknowledgement**

By receiving this presentation, you acknowledge and agree to the terms and conditions contained in this disclaimer and will be taken to have represented, warranted and undertaken that you have read and agree to comply with its contents and that you are able to receive this presentation and the information contained herein without contravening any applicable legal or regulatory restrictions. If you do not accept these terms and conditions, you must immediately return this presentation to MinRes and destroy all copies of it. A reference to “MinRes” or “the Company” in this disclaimer includes Mineral Resources Limited, its subsidiaries and any entity in which it has an equity or economic interest, and a reference to a “Representative” includes each director, officer, member, employee, contractor, auditor, agent, adviser or other representative.

## **Reliance on Information**

The information contained in this presentation has not been independently verified, is preliminary in nature and should not be relied upon for any purpose. This presentation may contain information derived from publicly available sources that have not been independently verified. MinRes and its Representatives do not make any representation or warranty, express or implied, as to the accuracy or completeness of the information contained herein, including any forward-looking statement. To the maximum extent permitted by law, MinRes and its Representatives shall have no liability for (i) any information, opinion, belief or other form of expression contained herein; (ii) any misstatement, mistake, error or inaccuracy in the information contained herein; (iii) any omission from it; or (iv) any reliance that any party may seek to place upon such information. Nor shall MinRes or its Representatives be liable to any recipient of this information for any loss, liability, damages (whether direct, indirect or consequential), costs or expenses arising from or in connection with the information contained herein. Recipients of this presentation and the information contained in it should conduct their own investigation and analysis and must not rely on the presentation and the information contained in it. Receipt of this presentation will be taken to be acceptance by you that you will only be relying on your own judgement, enquiries and investigations.

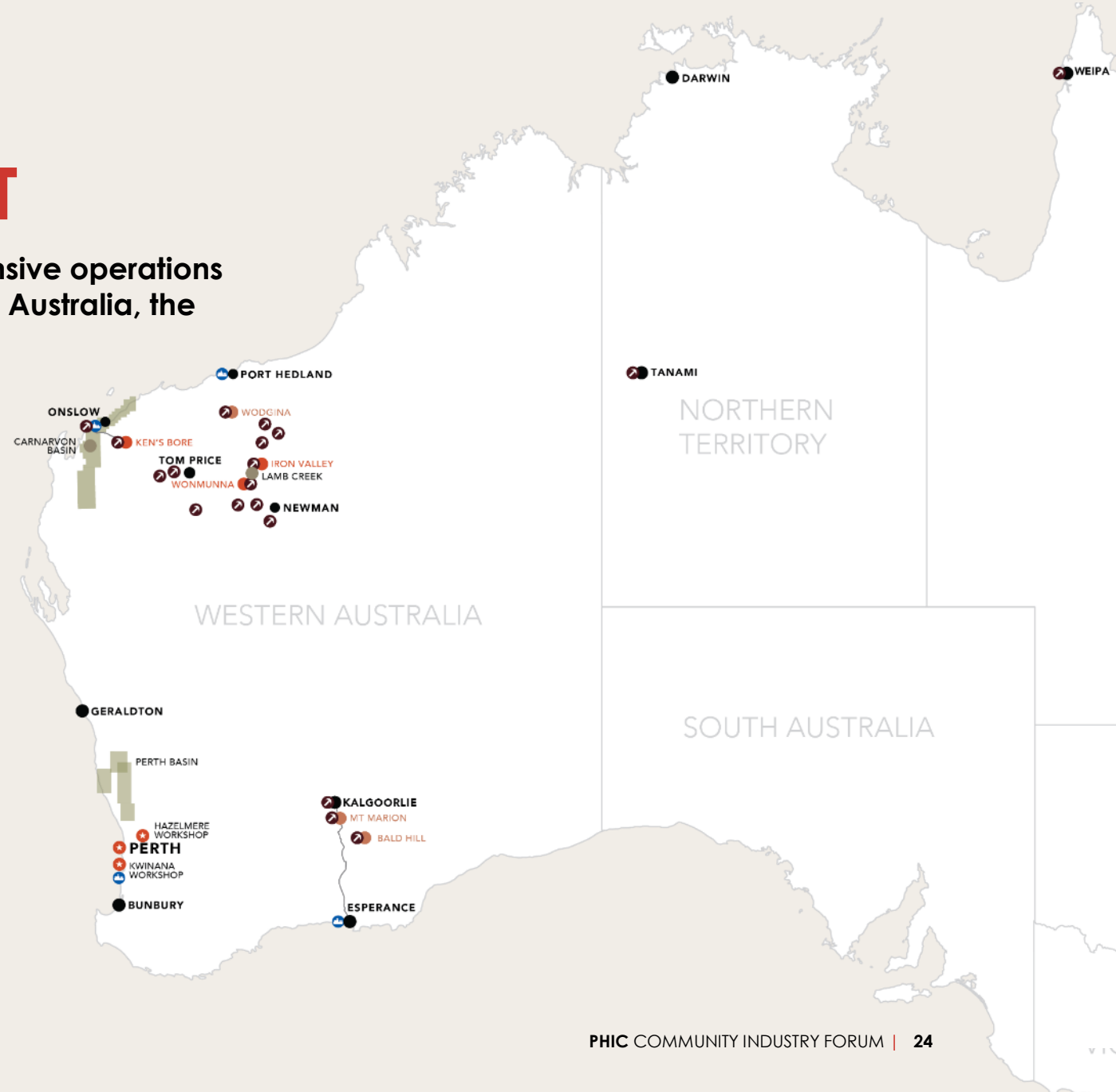
In providing this information, MinRes and its Representatives do not undertake any obligation to provide the recipient with access to any additional information or to update or correct the information. This information is strictly private and confidential, is provided solely for the attention of the persons to whom it is lawfully delivered, and may not be excerpted, summarised, distributed, reproduced or used without the prior consent of MinRes. Neither the receipt of this information by any person, nor any information contained herein, constitutes, or shall be relied upon as constituting, legal, business, tax, investment, accounting or financial advice from MinRes or any of its Representatives. Recipients of this presentation and the information contained herein should seek their own legal, tax, investment, accounting, financial and other appropriate professional advice.

# COMPANY **SNAPSHOT**

A leading diversified resources company with extensive operations in mining services and commodities across Western Australia, the Northern Territory, and Queensland.

	<p><b>MINING SERVICES</b> Innovative pit-to-ship mining services, capital infrastructure and operational expertise</p>
	<p><b>ENGINEERING AND CONSTRUCTION</b> In-house design, engineering and construction expertise supporting world-class project delivery</p>
	<p><b>IRON ORE</b> Transitioning to lower-cost, longer-life operations in the Pilbara and West Pilbara regions</p>
	<p><b>LITHIUM</b> Ownership in three hard rock lithium mines and partnerships with global battery mineral producers</p>
	<p><b>ENERGY</b> Prioritising natural gas and renewables to support a transition to lower emissions</p>

- ★ Office / Workshop
- Iron Ore operations
- Lithium operations
- ⤵ CSI Mining Services
- ⚓ Sea port
- Town
- Development project
- Energy exploration
- Haul road



# LOCAL OPERATIONAL UPDATE

## WODGINA



- Production volume of **226k dmt SC6** to end Q3 FY26.
- Guidance **upgraded** to **270-290k dmt SC6** (from 260-280k dmt SC6)
- Cost guidance **maintained** of **\$730-800/dmt SC6**

## PILBARA HUB



- Production volume of **7.2Mt** to end Q3 FY26.
- Guidance **maintained** of **9.0 – 10.0Mt**
- First ore **achieved** from the Lamb Creek iron ore project.

## ONslow IRON



- Shipped volume of **24.5M wmt (100% basis)** to end Q3 FY26.
- Guidance **upgraded** to **31-34M wmt (100%, up from 30-33M wmt)**
- Costs tracking at the **lower end** of guidance of \$54-59/wmt.

# WODGINA UPDATE

In partnership with Albemarle, MinRes operates the Wodgina lithium mine located 120km south of Port Hedland.

As the lithium market continues to improve, MinRes is assessing options to improve recovery rates and increase production capacity.



## OVERVIEW

Open cut mine employing conventional drill, blast, load and haul mining.



## PROCESSING

Currently running three trains at 750ktpa SC6 capacity.



## INFRASTRUCTURE

Gas fired 48MW power station and tailings storage facility with capacity to 2030.



## EXPANSION

Options assessments underway to increase current train capacity or install fourth train.



# LAMB CREEK UPDATE

**MinRes is developing the Lamb Creek iron ore operation, located 300km south-east of Port Hedland.**

Product will be blended with iron ore from our Iron Valley mine and hauled to the Port of Port Hedland for export through Utah Point.



## **MINE OVERVIEW**

Open pit mine with 7.5Mtpa capacity.



## **EXTENDED PRESENCE**

Project extends the Pilbara Hub's current production profile by over five years.



## **MAJOR MILESTONE**

First ore achieved just three months after breaking ground.



## **CONSTRUCTION TIMELINE**

Construction continuing with major construction complete by the end of 2026.



# ON SLOW IRON UPDATE

**Onslow Iron is unlocking billions of tonnes of stranded iron ore in the West Pilbara region.**

In May 2024, the project achieved first ore on ship and in August 2025 reached its nameplate capacity of 35Mtpa.



## **SUSTAINED NAMEPLATE CAPACITY**

The project has operated at sustained nameplate capacity since August 2025.



## **MARINE FLEET GROWTH**

Sixth transhipper – MinRes Lily – has arrived and will be commissioned shortly.



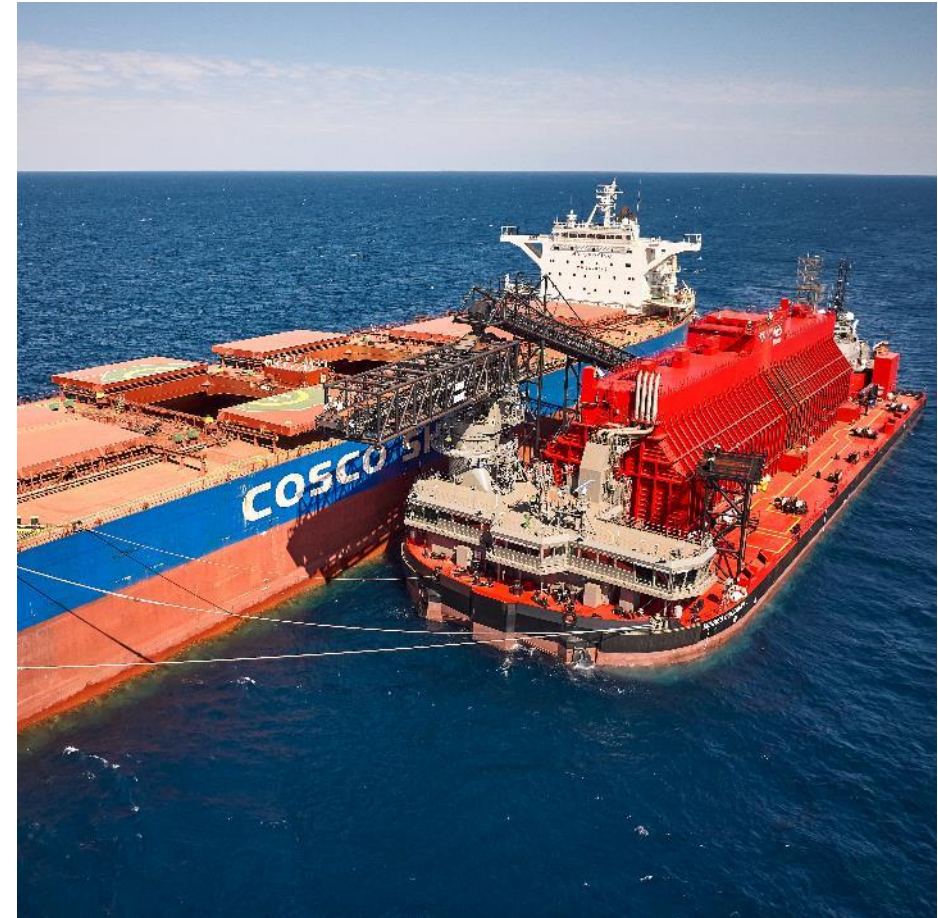
## **SATELLITE DEPOSIT STRATEGY**

Development of Ken's Bore and Upper Cane as high-grade deposits.



## **INDUSTRY-LEADING ACCOMMODATION**

Mungala Resort fully completed and occupied, setting a new standard for FIFO living.



# SOCIAL INVESTMENT **AT MINRES**

**We're committed to delivering positive benefits to the Western Australian community through our social investment program.**

We define social investment as the voluntary contribution of financial and in-kind support to organisations and projects that deliver benefits to the communities where we operate. Our social investment framework is built on three key pillars aimed at ensuring our support contributes to meaningful outcomes:



## HEALTH AND WELLBEING

- Mental and physical wellbeing.
- An emphasis on programs and initiatives that support youth.



## STRENGTHENING LOCAL COMMUNITIES

- Initiatives that support vibrant and inclusive communities.
- Community health and welfare.



## ECONOMIC EMPOWERMENT

- Skills development and employment pathways.
- Aboriginal and Torres Strait Islander employment business opportunities.

# SUPPORTING THE HEDLAND COMMUNITY

## YOUTH INVOLVEMENT COUNCIL



In partnership with YIC, MinRes supports the **Deadly Hearts** program, which engages children aged 5-11 in after school activities. **Deadly Hearts** offers a blend of engaging activities, nutritious foods and sessions that promote positivity, safety and wellbeing.

## NORTH PILBARA FOOTBALL LEAGUE



MinRes joined as the League's **Major Sponsor** in 2022 and provides vital funding and support to deliver the regular NPFL before an exciting MinRes Finals. The NPFL had more than 1,000 registered members including women, men and junior players along with umpires, coaches and volunteers participate in 2025 season.

## MARINE RESCUE PORT HEDLAND



Operated by a team of passionate volunteers, MRPH provides critical marine rescue services and timely emergency support to the community. In collaboration with our industry peers, MinRes provided funding towards the facility which will in turn provide critical services for industry and community users.

# SUPPORTING THE HEDLAND COMMUNITY

## SHOOTING STARS



In 2022, we extended our long-standing partnership by becoming principal partner of the **Deadly Minds Matter** program. MinRes has provided opportunities for Hedland Shooting Stars students including invites to CME's Inspiring Girls Forum, Leadership Immersion Days at our Osborne Park office and community activations.

## CLONTARF FOUNDATION



Our partnership supports the ongoing delivery of the national program. We've provided opportunities for Hedland Clontarf students including Leadership Immersion Days at our Osborne Park office and community activations. Since the partnership began, we've employed nine Clontarf alumni, and this year supported three Year 12 students pursuing higher education at WA universities.

## EAR SCIENCE INSTITUTE



Since 2022, MinRes has supported the Healthy Hearing Outback program helping bridge the gap for patients in the Pilbara. The on-the-ground role works closely with local Aboriginal medical services and the community to deliver ear health care in remote Aboriginal communities by combining telehealth with logistical, in-person support, ensuring patients get the care they need.

# SUPPORTING THE HEDLAND COMMUNITY

## FOODBANK WA



Foodbank WA visited more than 1,800 students at 42 schools across WA to deliver the nom! Schools program over the past year. Co-funded by MinRes, this hands-on nutrition education and cooking program helps build students' knowledge, confidence and skills to support healthy eating. Schools are eligible to participate in this program if they receive support through Foodbank WA's School Breakfast Program, indicating higher levels of disadvantage.

## DANDELIONS WA



MinRes assists with the costs of renting a space for the charity large enough to fill backpacks with back-to-school essentials for students unable to access items. In 2025, Port Hedland Primary School requested and received 50 bags, Cassia Education Support Centre requested and received 20 bags, Cassia Primary School requested and received 50 bags, Hedland High School requested and received 30 bags and South Hedland Primary School requested and received 30 bags.

## RONALD MCDONALD HOUSE



MinRes has a long-standing partnership with Ronald McDonald House helping provide nightly home-cooked meals for families they support. Our chefs, Zi and Tommy, work at the Nedlands House to prepare nutritious and delicious dinners every night of the week. Their work ensures the MinRes Commercial Kitchen can provide around 50,000 meals for the families staying with RMHC WA each year. 11% of the families staying at the house last year were Pilbara based.

## LIFELINE WA



Since 2020, MinRes has proudly partnered with Lifeline WA to support the mental health of all Western Australians. Building on this longstanding commitment in 2023, we renewed our partnership with a focus on providing funding to train 300 volunteer Digital Crisis Supporters over three years. With demand for online and text-based support services continuing to rise, our support help ensure Lifeline WA can reach more people in need anytime and anywhere.

# Community GRANTS

The MinRes Community Grants program provides funding of up to **\$10,000** to local organisations in the Pilbara and Goldfields-Esperance Regions, and within the Shires of Yilgarn, Irwin and Mingenew.

This year, MinRes provided community grants to **40 organisations** totalling more than **\$238,000**.

More than **\$790,000** has been awarded through the program since 2023.

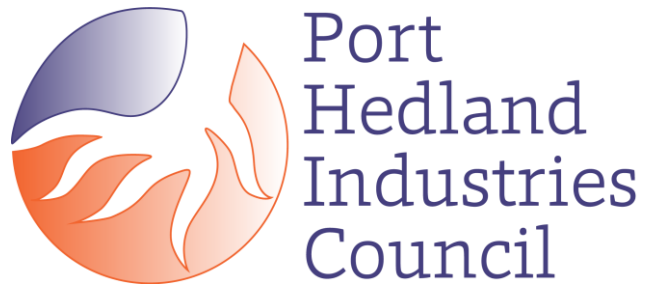


Since 2023, Hedland based community organisations have received over **\$150,000** through the MinRes Community Grants program. Hedland recipients include:

Bloodwood Tree Association	Hedland Women's Refuge	Port Hedland Netball Association
Care for Hedland Environmental Association	Julyardi Aboriginal Corp	Port Hedland Visitors Centre
CareFlight – Hedland	Kariyarra Aboriginal Corporation	Port Hedland Volunteer Fire & Rescue Services
Cancer Council WA (Pilbara)	Marine Rescue Port Hedland	Red Country Music Festival
Essentials Collective	North Pilbara Football League	South Hedland Primary School
Hedland Community Christmas Carols	PHLAGS+	Town of Port Hedland
Hedland Senior High School	Pilbara Health Network	Yandeyarra Remote Community School
Hedland Well Women's Centre	Pilbara Kimberley Universities Centre	Yandeyarra Community Store
	Port Hedland Chamber of Commerce	



**QUESTIONS?**



# 5 minute Break



Department of Water and  
Environmental Regulation

**Ed Schuller**

---

A/Executive Director



# Port Hedland Dust Management

Annual air quality monitoring reports & Progress update

Ed Schuller

CIF 20 May 2026



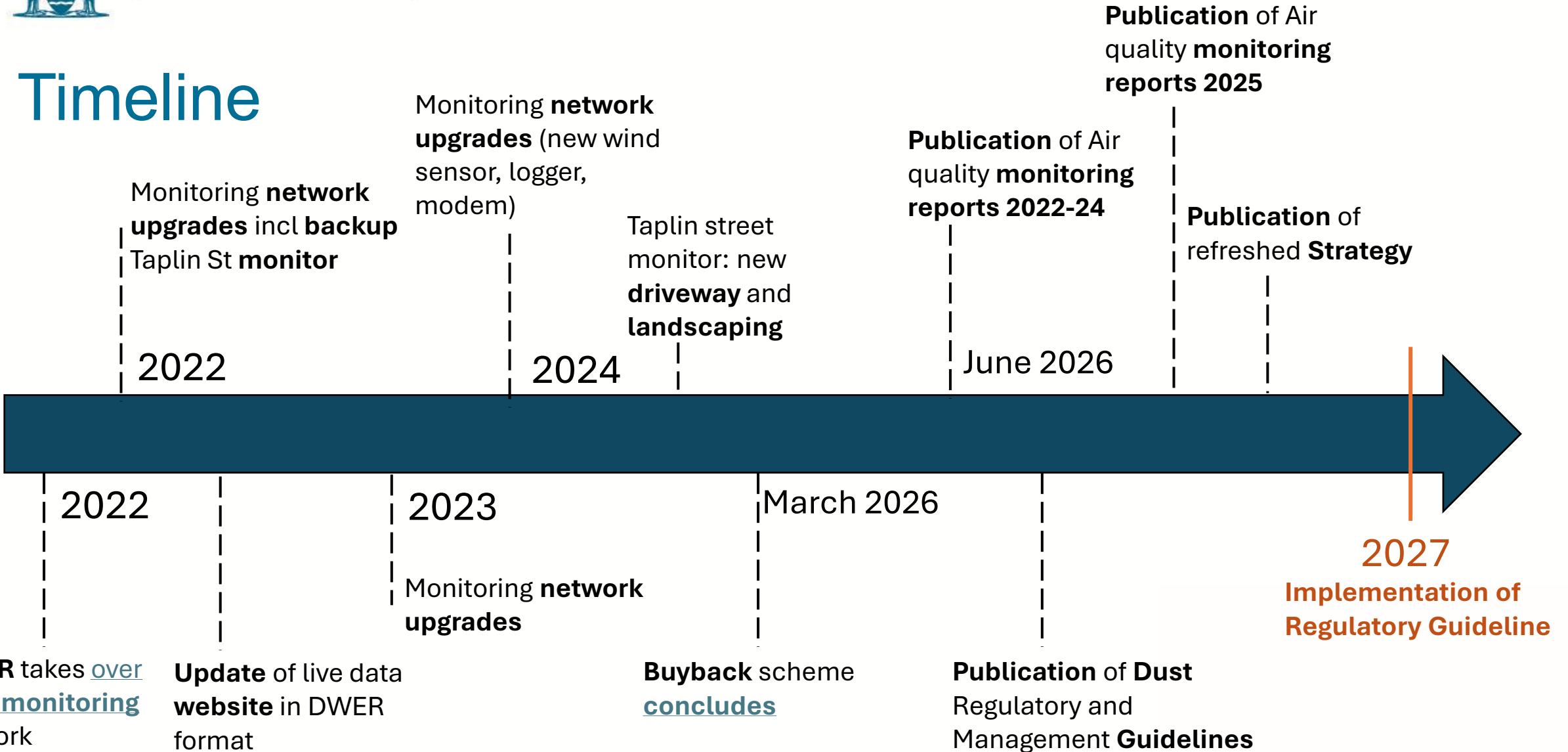
# History/Milestones

- Port Hedland Taskforce report (2017)
- Government response to Taskforce report (2018)
- Port Hedland Voluntary Buyback Scheme (2019 - March 2026)
- Risk-based licence reviews (2018-2022)
- Transfer of the Ambient Monitoring Network (2021)
- Port Hedland Regulatory Strategy (DWER-2021)
- Port Hedland Dust Management & Regulatory Guidelines (2026)
- Annual Air Quality Monitoring Reports 2022-2024, 2025



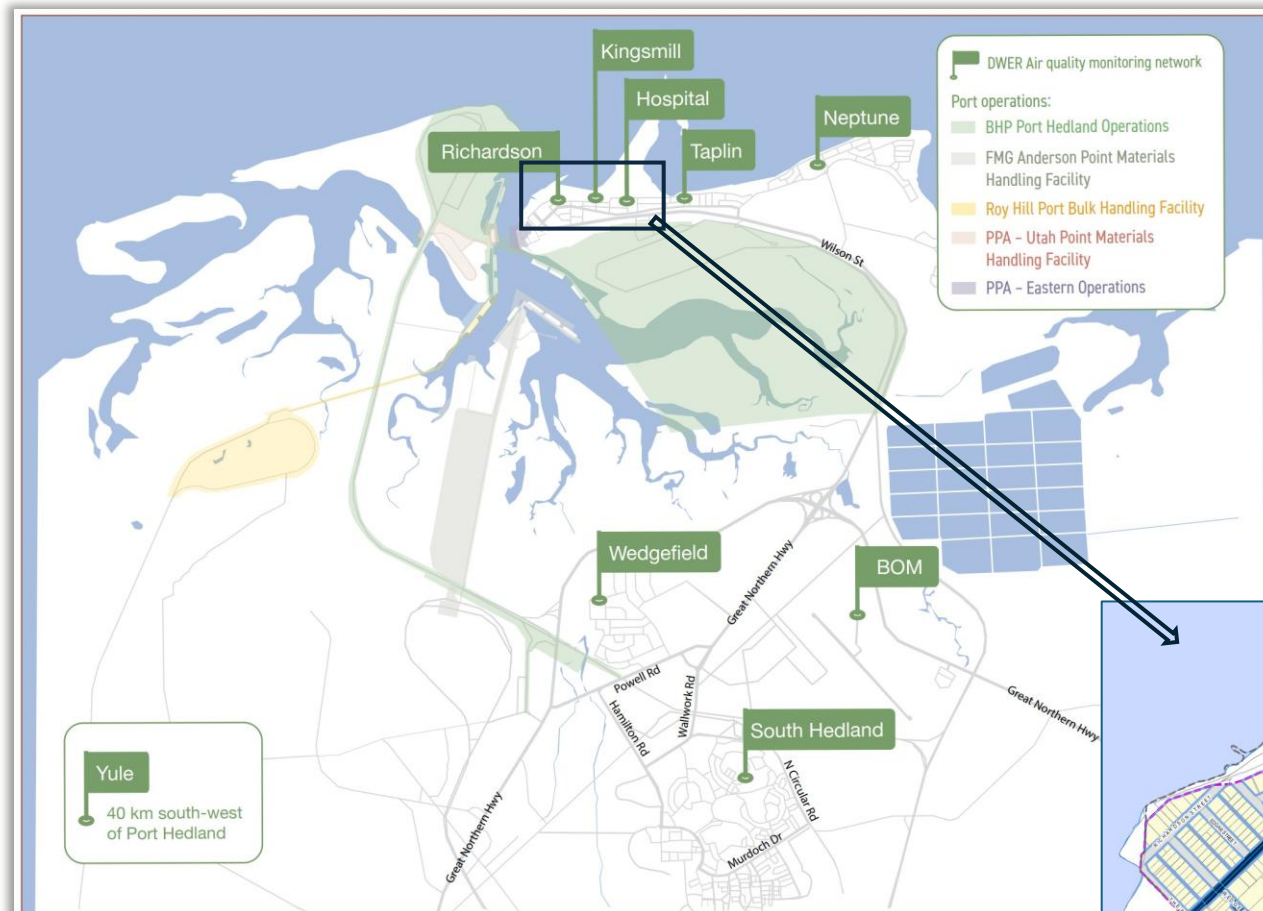


# Timeline



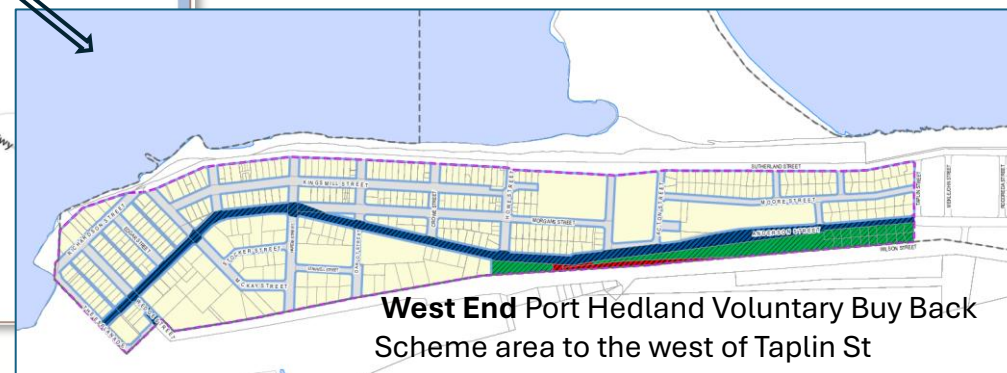


# Ambient Air Quality Monitoring (DWER)



## Key points

- **Taplin St** for reporting purposes/exceedances
- Port Hedland Air Guideline Value (AGV)  
 $PM_{10} = 70 \mu\text{g}/\text{m}^3$  (Taplin)\*
- DWER took over management of network Dec 2021





# Data availability for PM<sub>10</sub>

Monitoring Station	Data availability rates (% of days)														
	2022					2023					2024				
	Q1	Q2	Q3	Q4	Annual	Q1	Q2	Q3	Q4	Annual	Q1	Q2	Q3	Q4	Annual
<b>Valid?</b>	✓	✓	✓	✓	✓	✓	✓	✓	✓	✓	✓	✓	✓	✓	✓
Kingsmill	99.8	92.7	99.3	99.9	97.9	100	88.0	96.7	100	96.2	96.9	95.2	92.8	96.8	95.4
Richardson	99.6	99.7	96.8	99.7	99.0	100	94.5	96.7	100	97.8	98.9	94.1	98.4	93.2	96.2
Hospital	99.9	96.9	99.9	99.7	99.1	97.8	86.8	96.7	98.9	95.1	99.8	98.4	99.9	99.6	99.4
Neptune	94.5	95.3	98.4	99.9	97.1	100	86.8	98.9	100	96.4	80.1	82.7	92.1	99.8	88.7
Taplin	99.6	99.9	97.0	99.8	99.1	100	92.3	96.7	100	97.3	95.6	99.8	96.7	99.7	97.9
Wedgfield	96.9	92.0	99.5	92.9	95.3	100	92.3	90.2	97.8	95.1	90.9	89.6	90.9	95.6	91.7
BOM	99.7	98.1	99.2	99.1	99.0	100	89.0	95.7	100	96.2	99.5	98.6	99.8	99.1	99.3
South Hedland	99.5	98.9	97.1	99.5	98.7	100	78.0	92.4	98.9	92.3	94.7	86.8	85.8	95.6	90.7
Yule River	98.8	99.5	97.6	97.6	98.4	100	83.5	92.4	100	94.0	98.1	95.8	95.5	94.9	96.1

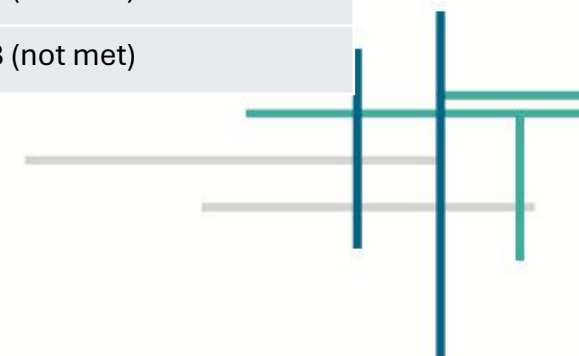
The AAQ NEPM *Technical Paper No. 5 – Data Collection and Handling* prescribes **75%** (annual and per Q) **as adequate data availability**, ensuring data quality. 2022-24 data is well above this requirements.

DWER follows a program of instrumentation upgrades and replacement to ensure validity and reliability of monitors.



# West End monitoring stations PM<sub>10</sub>

	2022	2023	2024
<b>PM<sub>10</sub> AGV 70 µg/m<sup>3</sup></b>			
	<b>Total Exceedances AGV (days)</b>	<b>Total Exceedances AGV (days)</b>	<b>Total Exceedances AGV (days)</b>
Richardson	12	72	35
Kingsmill	21	69	52
Hospital	14	65	51
<b>PM<sub>10</sub> NEPM annual guideline 25 µg/m<sup>3</sup></b>			
	<b>Annual average AAQ NEPM</b>	<b>Annual average AAQ NEPM</b>	<b>Annual average AAQ NEPM</b>
Richardson	42.3 (not met)	54.0 (not met)	47 (not met)
Kingsmill	40.2 (not met)	52.0 (not met)	48 (not met)
Hospital	38.6 (not met)	51.3 (not met)	48 (not met)





# West End monitoring stations NEPM pollutants

	2022	2023	2024
<b>PM<sub>2.5</sub> NEPM annual guideline 8 µg/m<sup>3</sup>, daily guideline 25 µg/m<sup>3</sup></b>			
	<b>Total Exceedances (days) of AAQ NEPM</b>	<b>Total Exceedances (days) of AAQ NEPM</b>	<b>Total Exceedances (days) of AAQ NEPM</b>
Richardson	0 (met)	17 (not met)	10 (not met)
Hospital	0 (met)	15 (not met)	14 (not met)
	<b>Annual average</b>	<b>Annual average</b>	<b>Annual average</b>
Richardson	8.1 (not met)	11.9 (not met)	11 (not met)
Hospital	7.7 (met)	10.7 (not met)	10 (not met)
<b>NO<sub>2</sub> NEPM annual guideline 15 ppb, hourly guideline 80 ppb</b>			
	<b>Annual average (ppb)</b>	<b>Annual average (ppb)</b>	<b>Annual average (ppb)</b>
Richardson	N/A	9 (met)	8 (met)
	<b>Max 1 hr average (ppb)</b>	<b>Max 1 hr average (ppb)</b>	<b>Max 1 hr average (ppb)</b>
Richardson	N/A	67 (met)	41 (met)
<b>SO<sub>2</sub> NEPM daily guideline 20 ppb, hourly guideline 100 ppb</b>			
	<b>Max daily average (ppb)</b>	<b>Max daily average (ppb)</b>	<b>Max daily average (ppb)</b>
Richardson	2.9 (met)	4.1 (met)	4 (met)
	<b>Max 1 hr average (ppb)</b>	<b>Max 1 hr average (ppb)</b>	<b>Max 1 hr average (ppb)</b>
Richardson	8.1 (met)	12.2 (met)	11 (met)



# Exceedances - Methodology

DWER	PHIC
<p><b>Exceptional (Natural) event</b> Bushfire, reduction burning, continental windblown dust</p>	<p><b>Natural/regional</b></p>
<p><b>Other event</b> Available data does not support attribution to industry or exceptional</p>	<p><b>Local (industry)</b> <b>Local (industry and non-industry)</b> <b>Natural/regional and local (industry)</b> <b>Natural/regional and local (industry and non-industry)</b> <b>Local (industry) and Natural/regional</b></p>
<p><b>Regulatory (Industry) event</b> Majority from industry</p>	<p><b>Exceedances &gt;50% industry contribution equivalent to DWER 'regulatory/industry' event</b></p>



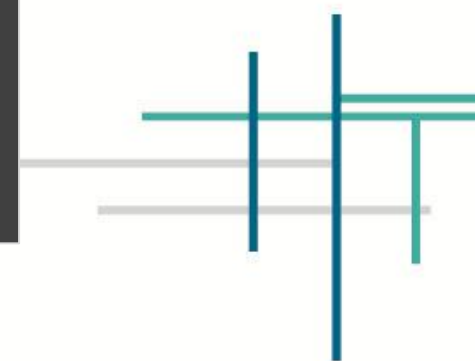
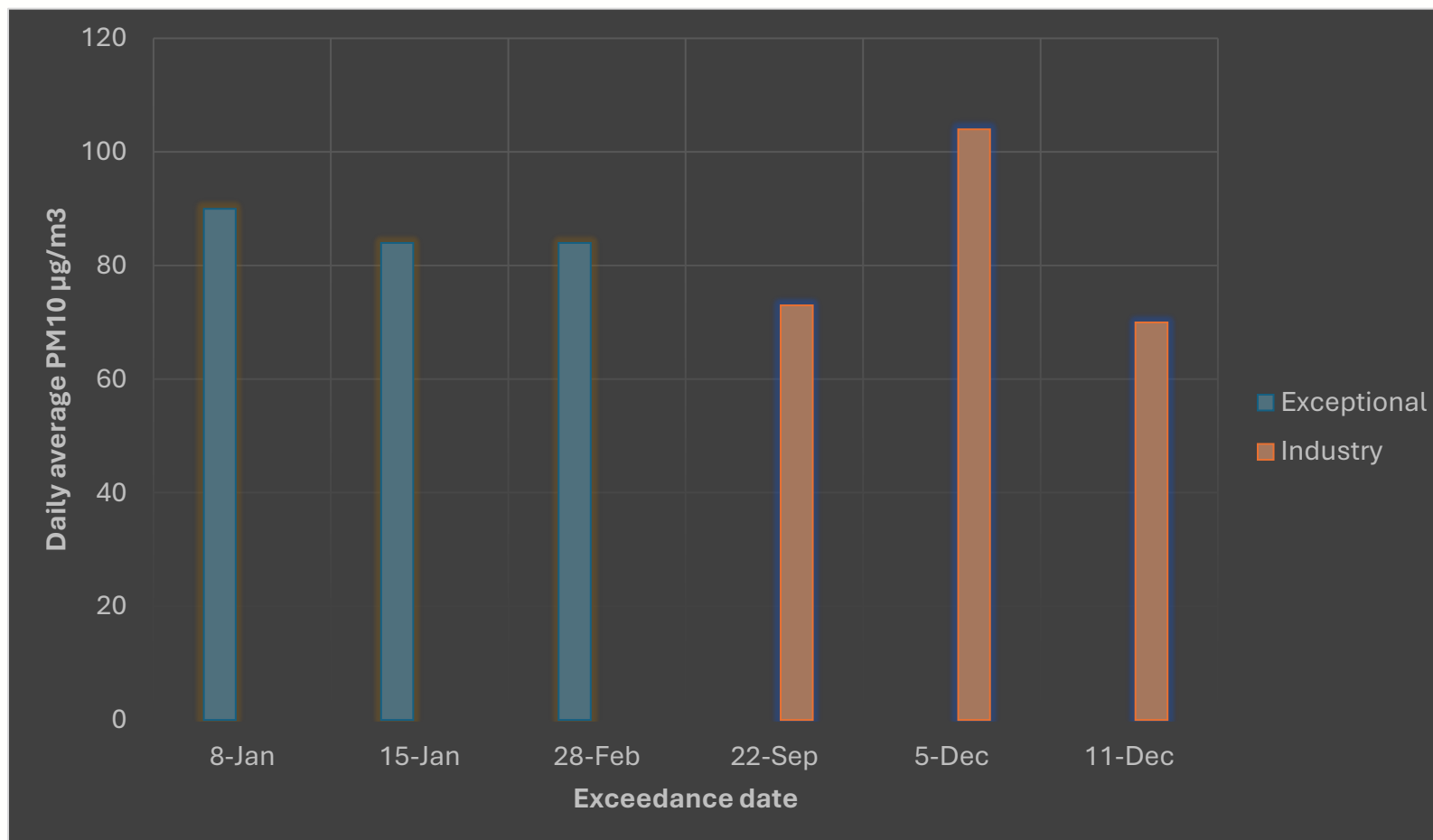
# Historic AGV exceedances summary

	DWER Analysis	PHIC Analysis
2022 Industry Attributed [Combination/Other] (Total)	<b>3</b> [0](6)	<b>0</b> [3](6)
2023 Industry Attributed [Combination/Other] (Total)	<b>13</b> [3](29)	<b>5</b> [9](29)
2024 Industry Attributed [Combination/Other] (Total)	<b>7</b> [10](31)	<b>5</b> [4](31)



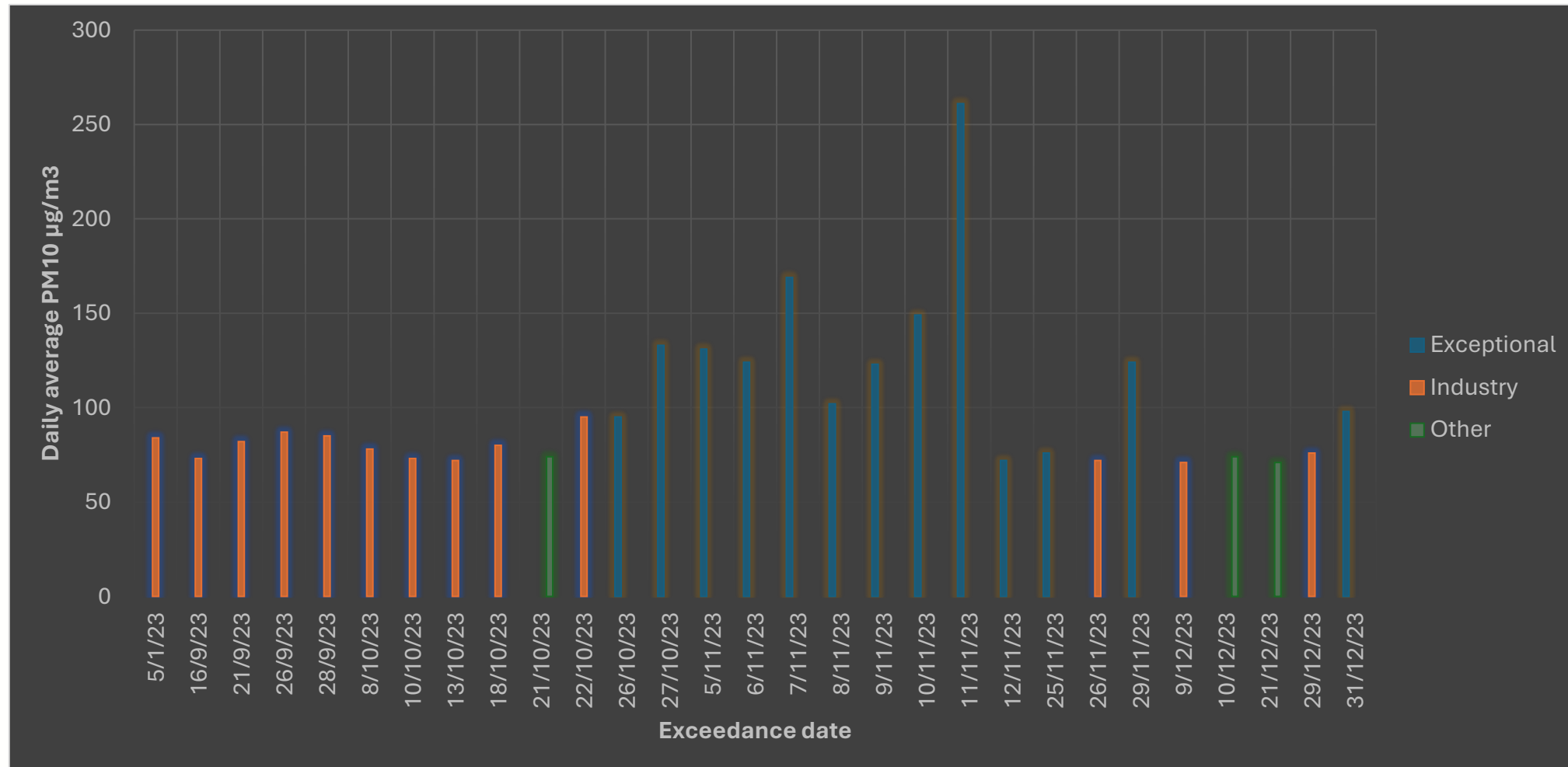


# 2022: AGV exceedances



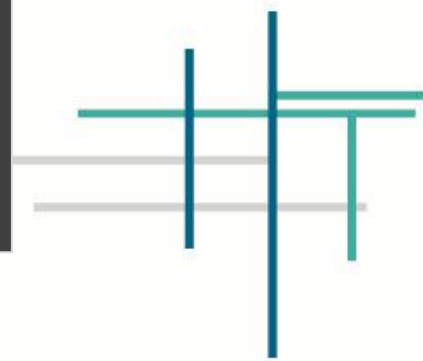
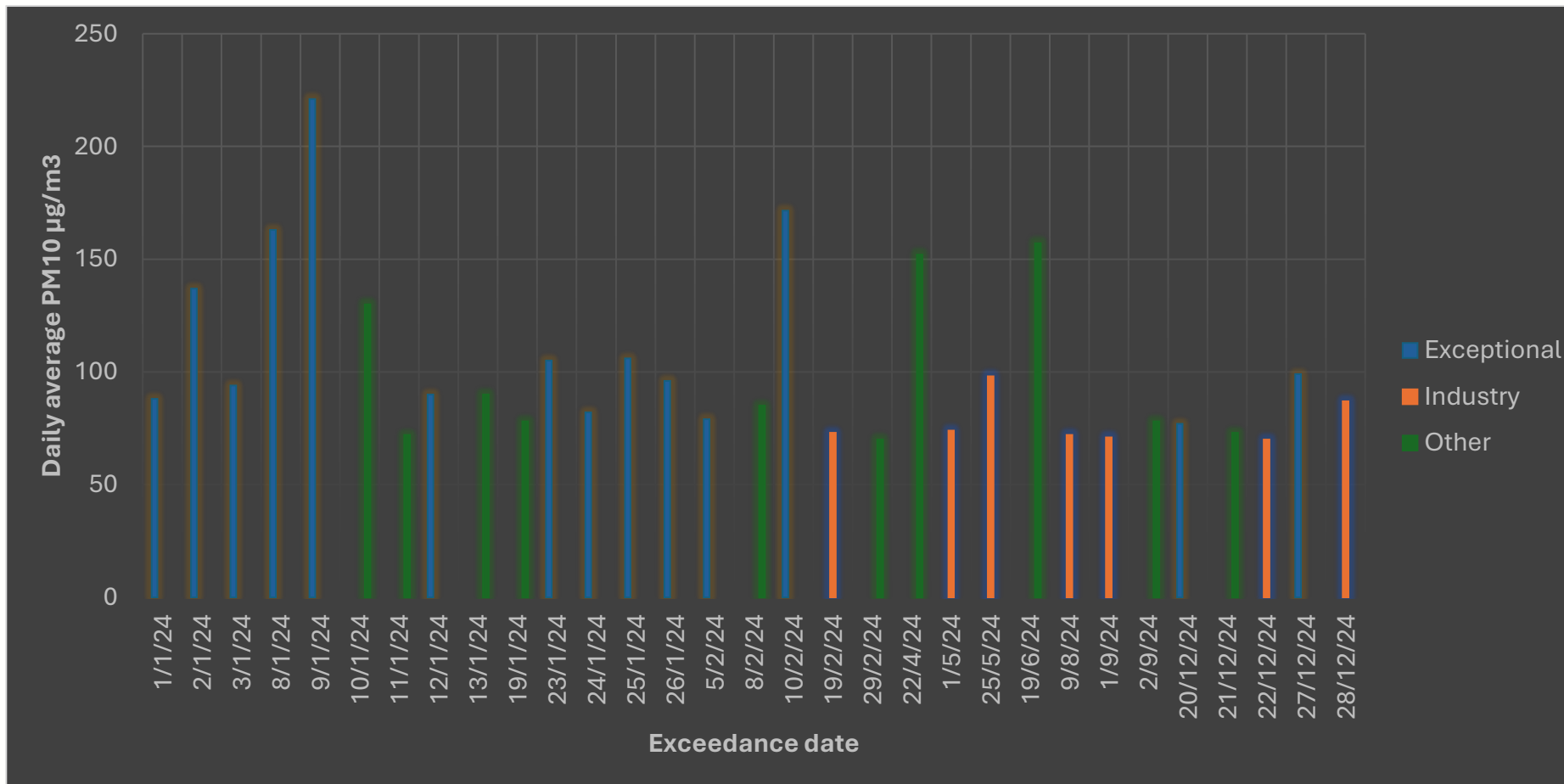


# 2023: AGV exceedances





# 2024: AGV exceedances





# PM<sub>10</sub> – residential, light industrial and background

	2022	2023	2024
<b>PM<sub>10</sub> NEPM annual guideline 25 µg/m<sup>3</sup></b>			
	<b>Annual average</b>	<b>Annual average</b>	<b>Annual average</b>
<b>Taplin</b>	34.0 (not met)	42.8 (not met)	40 (not met)
<b>Neptune</b>	23.7 (met)	26.6 (not met)	31 (not met)
<b>South Hedland</b>	21.2 (met)	27.5 (not met)	28 (not met)
<b>Wedgefield</b>	53.6 (not met)	64.0 (not met)	66 (not met)
<b>BOM</b>	29.0 (not met)	34.9 (not met)	29 (not met)
<b>Yule</b>	16.4 (met)	21.3 (met)	23 (met)



# PM<sub>2.5</sub> – residential and background

	2022		2023		2024	
<b>PM<sub>2.5</sub> NEPM daily guideline 25 µg/m<sup>3</sup>, annual guideline 8 µg/m<sup>3</sup></b>						
	<b>Daily max</b>	<b>Annual average</b>	<b>Daily max</b>	<b>Annual average</b>	<b>Daily max</b>	<b>Annual average</b>
<b>Taplin</b>	(met)	6.2 (met)	(not met)	8.2 (not met)	(Not met)	11 (not met)
<b>South Hedland</b>	N/A	N/A	(not met)	6.6 (met)	(Not met)	6 (met)
<b>BOM</b>	(met)	6.1 (met)	(not met)	9.1 (not met)	(Not met)	5 (met)
<b>Yule</b>	(met)	2.7 (met)	(not met)	4.9 (met)	(Not met)	4 (met)



# NEPM pollutants – Taplin St

		2022	2023	2024
<b>NO<sub>2</sub> NEPM annual guideline 15 ppb, hourly guideline 80 ppb</b>				
Taplin St	1hr max	35.5 (met)	50.1 (met)	41 (met)
	Annual average	7.7 (met)	8.2 (met)	7 (met)
<b>SO<sub>2</sub> NEPM daily guideline 20 ppb, hourly guideline 100 ppb</b>				
Taplin St	1hr max	5.6 (met)	10.4 (met)	7 (met)
	Daily max	1.7 (met)	2.0 (met)	5 (met)





# Current status

- **Resourcing** has been **reprioritised** by DWER, since February 2026 to address the delays in the publication of the Annual air quality reports
- **Public access to air quality data** for Port Hedland has been available on the DWER website **since 2022**
- Publication of **Annual Reports 2022-2024** by 30 June 2026
- Additionally, a **Regulatory Guideline** setting out the regulatory approach to manage dust in Port Hedland will be published 2026
- Following the conclusion of the Port Hedland Voluntary Buyback Scheme, the Department prioritises the protection of residential areas **east of Taplin Street**
- The Department intends to work collaboratively with the Department of Health (DoH) to ensure residents within the West End are informed of the impacts of dust and have access to adequate information from DoH to minimise their exposure risk





# Regulatory approach

- DWER acknowledges the past efforts to **manage** dust impacts on residents in the **West End**
- The **conclusion** of the **voluntary buy back scheme** in March 2026, provides a good foundation to manage dust impacts considering changes in the Port Hedland landscape and population
- Regulatory **focus on residents in East End**, considering past efforts to restrict residential use in the West End
- DWER committed to **continue informing** remaining residents in **West End** on air quality
- **Taplin Street** monitor remains key monitor to identify and record AGV exceedances



# Timeline


- Annual air quality reports 2022-2024 published on website June 2026
- Annual air quality report 2025 published on website September 2026
- Dust management Guideline published by September 2026
- Regulatory Guideline published and implemented by January 2027



# Key messages

- Public access to [Air quality data](#) for Port Hedland has been available via DWER website
- DWER committed to **continue informing** remaining residents in **West End** on air quality
- It is recommended for residents in the **West End** to refer to advice provided as [factsheet](#) by **DOH** (available on website).

Government of Western Australia Department of Health	
Port Hedland Air Quality Health Risk Assessment for Particulate Matter	
Environmental Health Directorate	
January 2016	
health.wa.gov.au	
11. References	38

 Government of Western Australia  
Department of Health

### Port Hedland air quality

A [health risk assessment \(external site\)](#) was completed in 2016 as part of a [whole of government response \(external site\)](#) to planning and management of land uses in and around the Port Hedland township and port.

There is some uncertainty as to the impacts from dust exposure and how and where the boundary of air quality standards is applied. There is also some ongoing conflict between minimising population growth due to dust impacts and developing a growing vibrant town on the peninsula. Still, Department of Health strongly supports all efforts to reduce dust levels to as low as reasonably achievable and separating residential areas from industry source emissions.

#### Are Port Hedland residents at risk of greater health effects from dust than the rest of the population?

The [risk to health from dust \(PM<sub>10</sub>\)](#) increases with increasing concentration and proximity to sources – this is true regardless of where people live. As yet there is no definitive evidence that particulates, measured as PM<sub>10</sub>, in Port Hedland are any more or less harmful than the types of particulates found in large urban centres. The [health risk assessment \(external site\)](#) demonstrated that increased levels of dust exposure can have an adverse impact on human health in Port Hedland over the long term. There is no immediate or acute health risk to the Port Hedland community – but there needs to be a focus on managing and minimising peoples' exposure to dust.

Areas of Port Hedland with increasing proximity to the port experience occasional high dust events (>70 µg/m<sup>3</sup>). It is therefore reasonable that people living in this environment would be at greater risk than people living in a less dusty areas of Port Hedland. Due to the increased risk for susceptible groups, facilities that cater for these groups (known as sensitive land-uses), such as child-care centres, aged-care residences, schools and health centres, are prohibited in the West End.

While the Port Hedland population remains small, the number of individuals theoretically affected is also small. In addition, relatively fewer sensitive individuals are likely to inhabit short-term accommodation in a high commercial land use area.

If the residential population is allowed to increase and broaden to include more sensitive or health compromised individuals, the number of affected people would increase.

#### Who is most at risk?

Persons susceptible to elevated dust levels include:

- older people (>65 years old)
- people with pre-existing cardiovascular or respiratory disease
- children and adults with pre-existing respiratory conditions (asthma, bronchitis, chronic obstructive pulmonary disease (COPD))
- children.

For most healthy individuals, effects from small increases in dust levels range from no observable effects to subtle, reversible and manageable effects. Effects become more pronounced as dust levels increase.





# Recap and Questions?



# Other Business – Updates from CIF members



# 2026 – CIF Quarterly schedule

## Dates

2026 19<sup>th</sup> August

12<sup>th</sup> November





For more information visit our website:  
[phic-hedland.com.au](http://phic-hedland.com.au)

Members



Associate Members

