



PORT HEDLAND INDUSTRY COUNCIL COMMUNITY INDUSTRY FORUM UPDATE

Simone Willshire – General Manager Port & Rail

LEAD • CARE • THINK • PERFORM

13 May 2020

IMPORTANT NOTICE

- This Presentation is intended to provide attendees with information regarding the Roy Hill Project in the Pilbara, West Australia. It is not, and does not purport to be, all-inclusive nor does it contain all the information that a third party may require to evaluate the Roy Hill Project.
- The information contained in this Presentation has been collated from third party sources. Roy Hill Holdings Pty Ltd (RHH) has prepared this Presentation in good faith relying on such information and has not undertaken steps or enquiries to independently verify the accuracy, reasonableness or completeness of the information.
- RHH and its related bodies corporate do not assume any responsibility whatsoever to any recipient of this Presentation for loss or damage of any kind arising as a result of the use of, or reliance on, the information in this Presentation for any purpose.
- No representation or warranty is given as to, and the recipient must not rely on, any information, statement or opinion contained in this Presentation, or its accuracy, reasonableness or completeness.
- * This presentation may contain certain projections, forecasts and forward looking statements (Projections) which may or may not prove to be correct. These Projections are speculative and actual future results may vary from the Projections.
- The recipient may not disclose the information in this Presentation to any other party without the prior written consent of RHH.

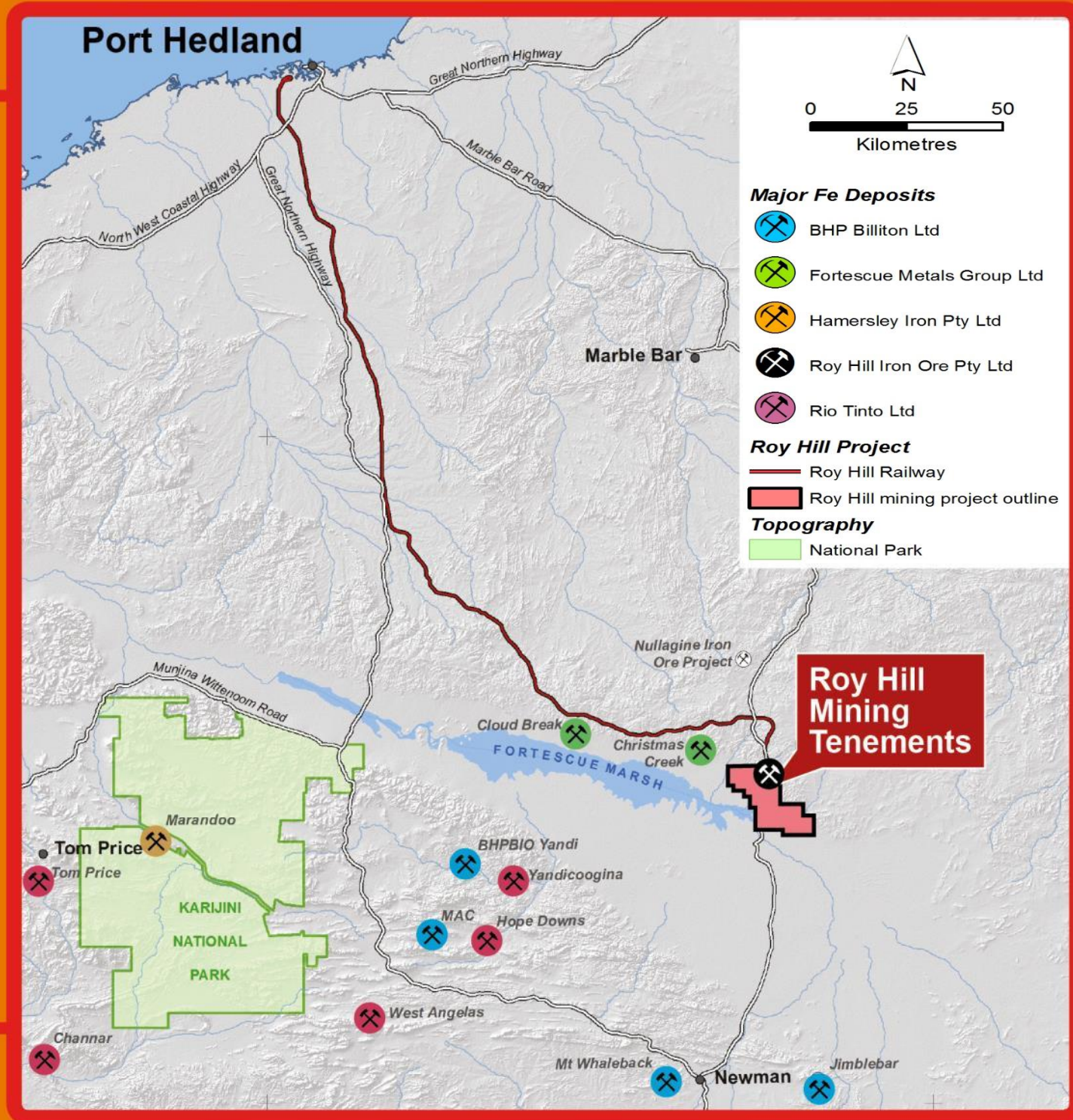
Agenda



- Business Update
 - A brief history of Roy Hill
 - Key recent highlights
- Our People and the Roy Hill Community
- Our response to COVID-19
- Leveraging Technology to Improve Safety and Productivity
 - WHIMS
 - Roy Hill's move to autonomous trucks
- Looking Ahead



Location



History: Ramp up



2012-13

- Initial enabling infrastructure – mine and port villages, mine roads, construction camps along rail, Ginbata aerodrome

FY17

- Operations and ramp up begin
- Production/sales 33Mt



FY18

- Ramp up finalised and lenders' completion testing achieved
- Production/sales 51Mt
- Roy Hill Board commits to WHIMS plant construction

FY19

- Production/sales 55Mt
- Government approval to increase shipping to 60Mt
- WHIMS plant – project complete

Key Highlights



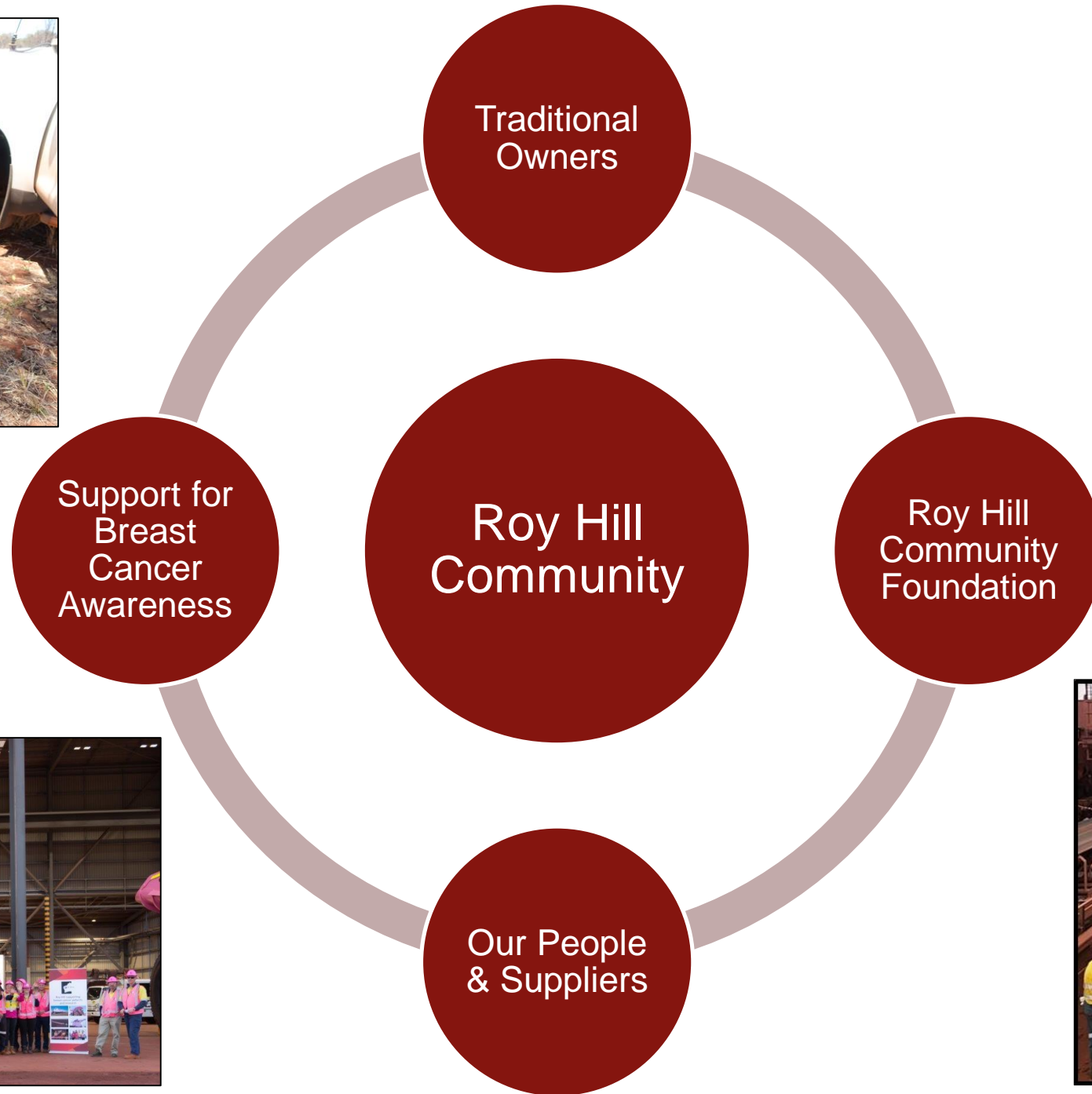
- First ore shipped from South West Creek berths on 10 December 2015.
- Sustainably produced 55Mt FY19.
- Activities underway to increase shipping sustainably to 60Mtpa run rate by end of FY20.
- Roy Hill named Digger of the Year at 2019 Diggers & Dealers in Kalgoorlie





OUR PEOPLE AND THE ROY HILL COMMUNITY

The Roy Hill Community



Creating a Mentally Healthy Community



Community

Work

Financial

Social /
Family

Physical
wellbeing

Roy Hill's COVID-19 focus



**keeping
you SAFE**



**keeping
you HEALTHY**



**keeping
PRODUCTION
GOING**

Supporting the Roy Hill Community through COVID-19



- Our Community Development Team has been working with local communities and Foodbank WA to support the needs of our community and Traditional Owners.
- Our Custom-made care packs commenced delivery last month, with deliveries to six Pilbara communities in the Roy Hill footprint, including Port Hedland.








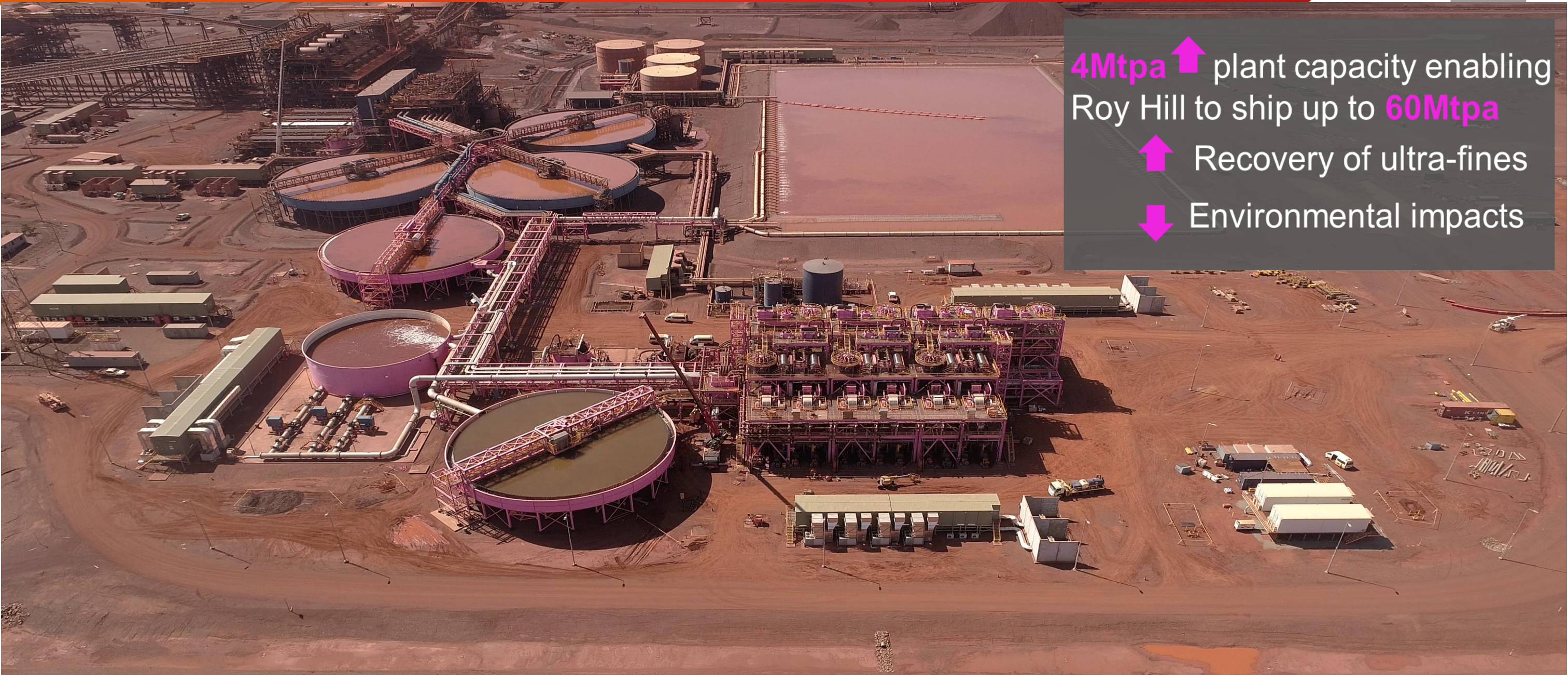
TECHNOLOGY:

THE KEY TO IMPROVE SAFETY, PRODUCTIVITY
AND MAXIMISE VALUE FROM OUR OREBODY

Achieving 60Mtpa with our Wet High Intensity Magnetic Separator (WHIMS)



4Mtpa  plant capacity enabling Roy Hill to ship up to 60Mtpa
 Recovery of ultra-fines
 Environmental impacts



Ramp up completed **March 2020**

Autonomous Haul Trucks



- In February 2020 Roy Hill announced Epiroc and ASI Mining as our partners to automate our mixed fleet of 77 haul trucks.
- The Epiroc/ASI solution will have the ability to expand to other mining vehicle and manufacturer types, as well as the ability to integrate with Roy Hill systems.
- A staged development process is planned to ensure the automation system is safely introduced to Roy Hill's operational environment
- Roy Hill is committed to securing viable redeployment opportunities for our employees impacted by automation
- Operational Readiness team is dedicated to supporting our operational team's safe transition to autonomous haulage



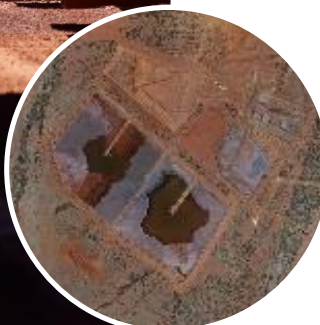
Looking Ahead: Optimise Resource and Increase Life of Mine



WHIMS Stage 1.5 & 2



Increasing tonnes shipped



Tailings Recovery



THANK YOU