

2022

About PHIC

Building on the economic value the Port of Port Hedland delivers to the WA economy remains a primary focus for the Port Hedland Industries Council.

PHIC works collaboratively to support industry and the Port Hedland community.

It is the key point of contact between the community, industry and State and local government agencies as plans are developed not only to grow the port but also to improve and grow the town.

Industry is as invested in Port Hedland and its future as those who call the town home because industry is part of the community and it recognises that it has a role to play in supporting the social, economic and environmental health of Port Hedland.

PHIC established the [Community Industry Forum](#) to provide a direct channel for information sharing so that the community can receive information and updates not only from PHIC members but a range of businesses and agencies operating in the town.

It is this cooperative approach to information sharing that forms the basis for PHIC's operations.



GROWING OUR ECONOMY

The resources industry in the Pilbara and the economic infrastructure of the Port of Port Hedland are the powerhouses of economic growth for WA and Australia.

The extent of the value to WA was reflected in Treasury figures that revealed iron ore royalties for 2020-21 had increased significantly since a mid-year review in December 2020, giving the State Government a record budget surplus of about \$5 billion.

In 2020-21, Australia exported \$149 billion of iron ore, providing a massive contribution to wages, jobs, local communities and funding for essential services during the COVID-19 pandemic.

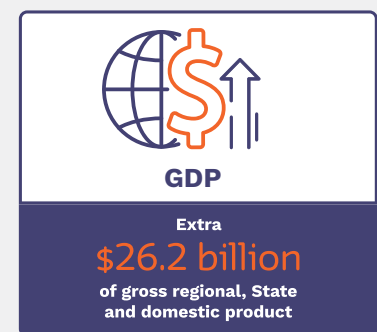
Ensuring the ongoing growth of the port is not only vital for the State, but also for ensuring a strong and thriving Port Hedland community now and in the future.

The future of the mining industry in the Pilbara region is strong and the flow-on economic benefits of the growth of trade through the Port of Port Hedland are profound.

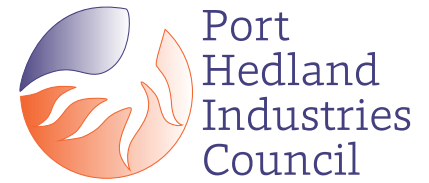
ACIL Allen Consulting's 2019 report, The Economic Significance of the Port of Port Hedland, commissioned by PHIC, reinforces the importance of the port and its supply chain and the economic benefits that will flow from steady growth.

This growth will provide new opportunities for Port Hedland businesses, particularly those that support port users, but also non-port related businesses as the economy expands. >

VALUE OF FUTURE ECONOMIC GROWTH OF THE PORT OF PORT HEDLAND TO 2028-29



SOURCE: 2019 THE ECONOMIC SIGNIFICANCE OF THE PORT OF PORT HEDLAND - ACIL ALLEN CONSULTING



> DUST MANAGEMENT

PHIC members implement leading dust mitigation practices and deliver a coordinated approach through the sharing of information, knowledge and innovations.

Industry has been working with government departments, initially through the Port Hedland Dust Management Taskforce, for more than a decade and will continue to work with the government and the community to balance the interests of residents and businesses, and those of the export industries that are vital to the town, the State and the nation.

Collectively, PHIC advances investment in new technology and innovations and proactively shares information, experience and knowledge on dust management.

PHIC and its members are committed to continuous improvement of effective dust management and mitigation activities to achieve a zero-net increase in dust emissions even if throughput increases.

WORKING WITH THE REGULATOR

Port users, including PHIC members handling or exporting bulk commodities through the port, operate under Part V environmental licences issued by the Department of Water and Environmental Regulation (DWER) under the Environmental Protection Act.

PHIC has worked with the regulator on several key initiatives, including transfer of the ambient air quality monitoring network to DWER control and development of the [Port Hedland](#)

[Regulatory Strategy](#). PHIC continues to work with DWER on the development of best-practice dust management guidelines for Port Hedland.

PLANNING FOR THE FUTURE

Port Hedland is entering an era of major change with the \$121.5 million Spoilbank Marina, the new maritime precinct and the Port Hedland Voluntary Buyback Scheme.

The maritime precinct is an opportunity to create a unique and attractive maritime hub of international standing.

The separation of industry and sensitive land uses through appropriate land use planning controls brings Port Hedland into alignment with modern planning principles and is fundamental to ensuring industry has the certainty to continue to grow.

Industry is committed to achieving the best result for port users, landowners and the wider Port Hedland community to ensure the sustainable co-existence of the port and the community.

PHIC members have invested significantly in the West End of Port Hedland over many years and will continue to invest in the future of Port Hedland.

'PHIC members will continue to invest in the future of Port Hedland!'

INDUSTRY - PART OF THE COMMUNITY

Industry invests in the Port Hedland community through a range of social and environmental programs.

PHIC members contributed more than \$9 million in 2018/19 toward social investment activities and community infrastructure projects and they support a wide range of ongoing community projects in Port Hedland.

These include programs and initiatives providing youth and Indigenous opportunities, major festivals, community events, education and career development traineeships and employment programs, health and wellbeing projects, and funding for social infrastructure such as pop-up markets, skate parks, and other recreational outlets.

They also champion environmental stewardship, ensuring best practice across the Port Hedland community.

Our members support the Traditional Owners of the region to grow their businesses, with contracts awarded to Aboriginal businesses and joint ventures involving Aboriginal businesses.

PHIC established the Community Industry Forum as a direct means of communication and regularly participates in Port Hedland Chamber of Commerce activities to ensure information is shared widely.

PHIC will continue to work with the community and the government to ensure the long-term prosperity of Port Hedland.

PHIC Members

