

# 2021

## Value of the Port of Port Hedland



**Our members not only create jobs and support local business, they create prosperity for the Town of Port Hedland.**

### JOBS AND INCOME Snapshot

# IN 2018/19



**\$491 million  
in Port Hedland**



**\$1.33 billion  
across the Pilbara**



**\$9.1 billion  
across WA**

**The Port Hedland Port Supply Chain supports one in every 12 WA jobs**

For every full-time job with the Port and its supply chain, two more full-time jobs are created in Port Hedland's economy.

The Port Hedland Port Supply Chain is the engine room of WA's economy and is responsible for one in every 12 jobs throughout the State.

It pumped \$54.7 billion into WA's economy in 2018/19, and a study has revealed the vast wealth it distributes across Australia in wages, taxes, royalties and economic growth.

Based on a steady increase in iron ore exports, and other commodities including lithium and salt, over the next 10 years, *The Economic Significance of the Port of Port Hedland* report compiled by ACIL Allen Consulting for PHIC shows that the future of the mining industry in the Pilbara region is strong.

Ensuring the sustainability of industry and the growth of the port is vital for the ongoing economic growth of the State and the Port Hedland community.

The steady growth predicted by a range of port users is expected to deliver an extra \$26.2 billion of gross regional, State and domestic product over the next 10 years; a potential increase in real income of \$32.1 billion; an extra \$21 billion in State and Federal taxes and royalties; and more than 5300 extra jobs a year across Australia.

### FUTURE VALUE TO 2028/29



**GDP**

**Extra  
\$26.2 billion**  
of gross regional, State and domestic product



**JOBS**

**Extra  
5,307 FTE**  
jobs a year across Australia



**TAXES AND ROYALTIES**

**Extra  
\$21 billion**  
across WA and Australia



**REAL INCOME**

**Potential Increase**

**\$14.9 billion**  
Pilbara

**\$14.4 billion**  
Western Australia

**\$2.9 billion**  
Australia

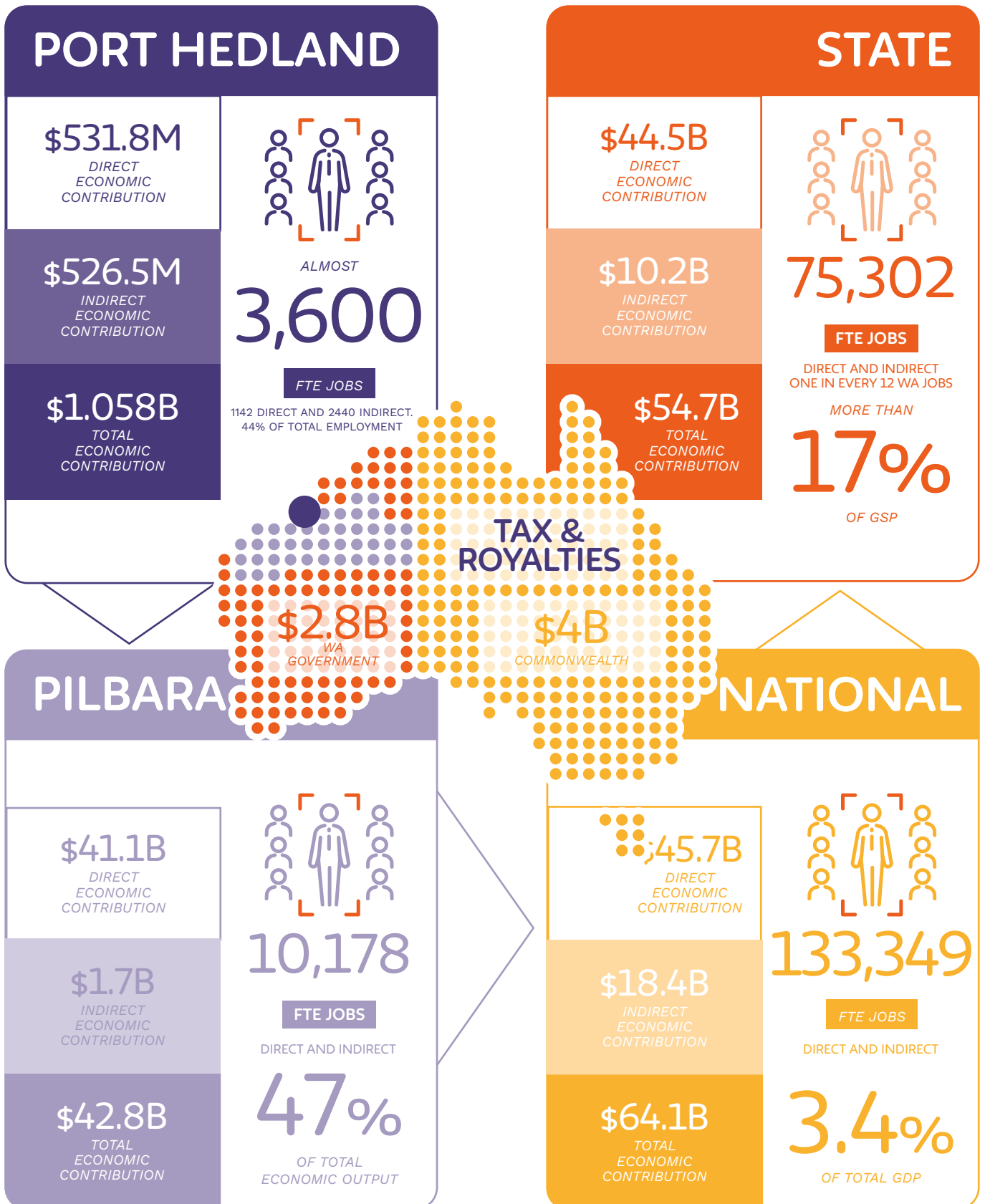
**↑ \$2.3 billion**  
WA royalty receipts up

**↑ \$789 million**  
WA payroll tax receipts up

**↑ \$1.7 billion**  
Other taxes up

SOURCE: 2020 THE ECONOMIC SIGNIFICANCE OF THE PORT OF PORT HEDLAND - ACIL ALLEN CONSULTING

# Port Hedland Port Supply Chain Economic Contribution 2018/19



SOURCE: 2020 THE ECONOMIC SIGNIFICANCE OF THE PORT OF PORT HEDLAND - ACIL ALLEN CONSULTING